

# Product Information Sheet

COMMISSION DELEGATED REGULATION (EU) 2019/2015 with regard to energy labelling of light sources

**Supplier's name or trade mark:** Nordlux

**Supplier's address:** Nordlux A/S, Østre Havnegade 34, 9000 Aalborg, DK

**Model identifier:** 2112245001

## Type of light source:

Lighting technology used:	LED	Non-directional or directional:	DLS
Light source cap-type (or other electric interface)	LED Module		
Mains or non-mains:	NMLS	Connected light source (CLS):	No
Colour-tuneable light source:	No	Envelope:	-
High luminance light source:	No		
Anti-glare shield:	No	Dimmable:	Yes

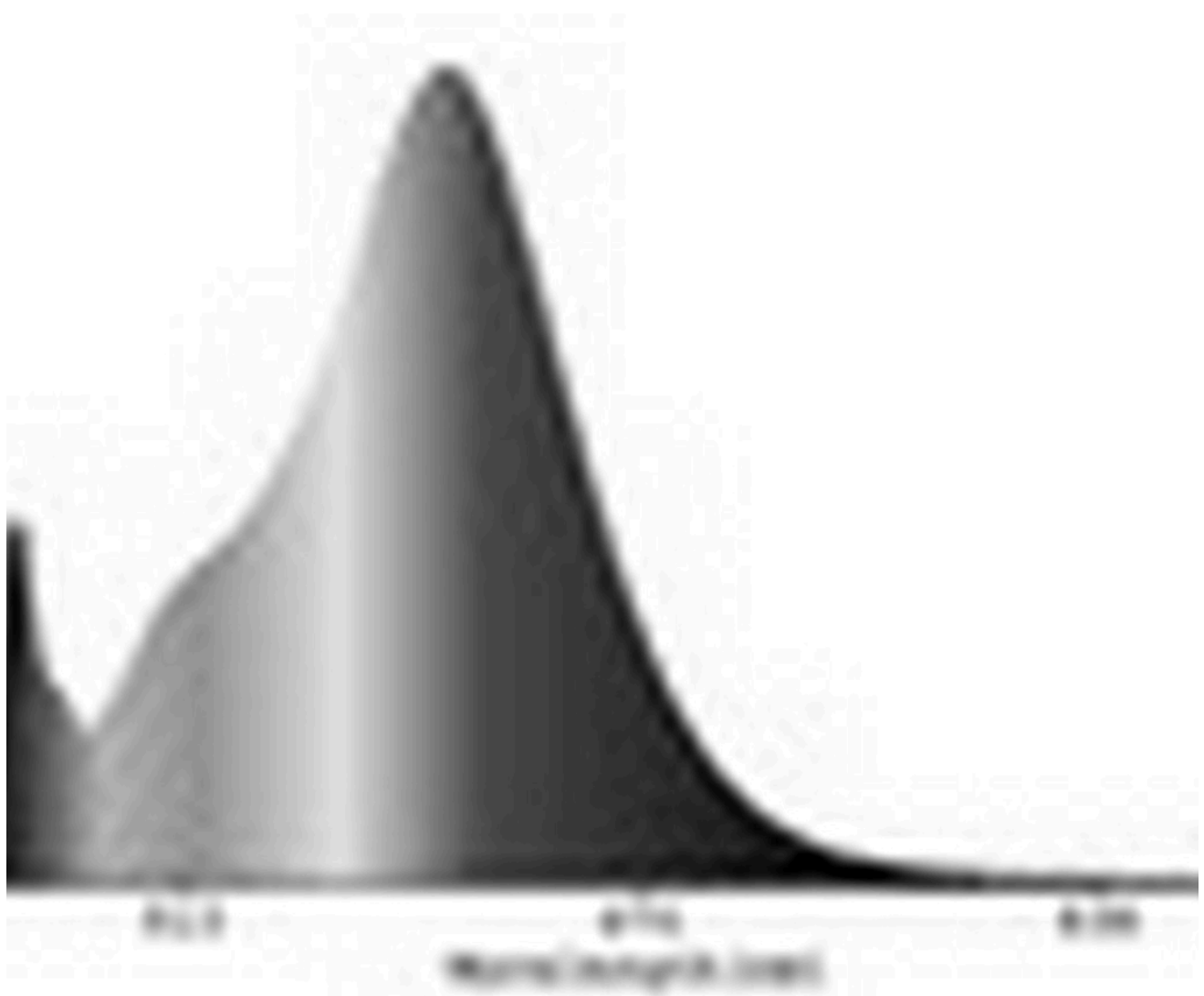
## Product parameters

Parameter	Value	Parameter	Value
<b>General product parameters:</b>			
Energy consumption in on-mode (kWh/1000 h), rounded up to the nearest integer	4	Energy efficiency class	F
Useful luminous flux ( $\phi_{use}$ ), indicating if it refers to the flux in a sphere (360°), in a wide cone (120°) or in a narrow cone (90°)	320 in Narrow cone (90°)	Correlated colour temperature, rounded to the nearest 100 K, or the range of correlated colour temperatures, rounded to the nearest 100 K, that can be set	2 700
On-mode power ( $P_{on}$ ), expressed in W	3,2	Standby power ( $P_{sb}$ ), expressed in W and rounded to the second decimal	0,00
Networked standby power ( $P_{net}$ ) for CLS, expressed in W and rounded to the second decimal	-	Colour rendering index, rounded to the nearest integer, or the range of CRI-values that can be set	80
Outer dimensions without separate control gear, lighting control	Height	400	Spectral power distribution in the range 250 nm to 800 nm, at full-load
	Width	155	
	Depth	100	
			See image in last page

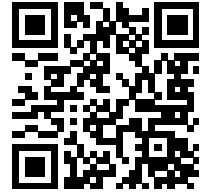
parts and non-lighting control parts, if any (millimetre)			
Claim of equivalent power <sup>(a)</sup>	-	If yes, equivalent power (W)	-
		Chromaticity coordinates (x and y)	0,463 0,420
<b>Parameters for directional light sources:</b>			
Peak luminous intensity (cd)	5 563	Beam angle in degrees, or the range of beam angles that can be set	41
<b>Parameters for LED and OLED light sources:</b>			
R9 colour rendering index value	0	Survival factor	1,00
the lumen maintenance factor	0,95		

(a) : not applicable;

(b) : not applicable;



Model placed on the Union market from 21/06/2021



**EPREL registration number:** 788352

<https://eprel.ec.europa.eu/qr/788352>

**Supplier:** Nordlux A/S (Manufacturer)

**Website:** [www.nordlux.dk](http://www.nordlux.dk)

**Customer care service:**

**Name:** Nordlux A/S

**Website:** <https://www.nordlux.dk>

**Email:** [nordlux@nordlux.dk](mailto:nordlux@nordlux.dk)

**Phone:** +45 98181611

**Address:**

Østre Havnegade 34

9000 Aalborg

Denmark