

Product Information Sheet

COMMISSION DELEGATED REGULATION (EU) 2019/2015 with regard to energy labelling of light sources

Supplier's name or trade mark: Pöllet Produktion

Supplier's address: Info, Allersberger Straße 52-54, 90596 Schwanstetten, DE

Model identifier: LQP000059CS0A

Type of light source:

Lighting technology used:	LED	Non-directional or directional:	DLS
Light source cap-type (or other electric interface)	Nein		
Mains or non-mains:	NMLS	Connected light source (CLS):	No
Colour-tuneable light source:	Yes	Envelope:	-
High luminance light source:	No		
Anti-glare shield:	No	Dimmable:	Only with specific dimmers

Product parameters

Parameter	Value	Parameter	Value
-----------	-------	-----------	-------

General product parameters:

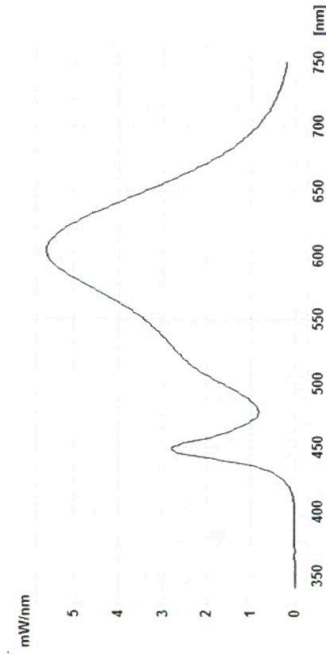
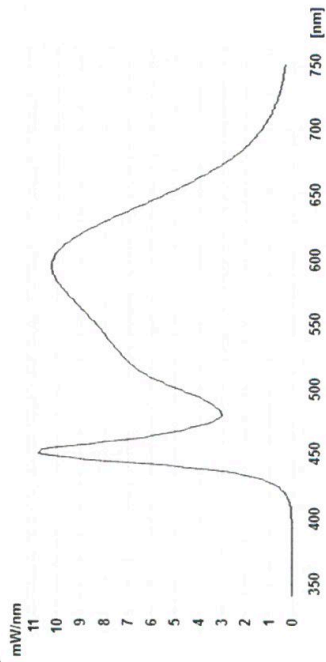
Energy consumption in on-mode (kWh/1000 h), rounded up to the nearest integer	6	Energy efficiency class	E
Useful luminous flux (ϕ_{use}), indicating if it refers to the flux in a sphere (360°), in a wide cone (120°) or in a narrow cone (90°)	595 in Sphere (360°)	Correlated colour temperature, rounded to the nearest 100 K, or the range of correlated colour temperatures, rounded to the nearest 100 K, that can be set	2930...3995
On-mode power (P_{on}), expressed in W	5,0	Standby power (P_{sb}), expressed in W and rounded to the second decimal	0,00
Networked standby power (P_{net}) for CLS, expressed in W and rounded to the second decimal	-	Colour rendering index, rounded to the nearest integer, or the range of CRI-values that can be set	83
Outer dimensions without separate control gear, light-	Height	2	Spectral power distribution in the range 250 nm to 800 nm, at full-load
	Width	59	
	Depth	59	
			See image in last page

ing control parts and non-lighting control parts, if any (millimetre)			
Claim of equivalent power ^(a)	-	If yes, equivalent power (W)	-
		Chromaticity coordinates (x and y)	0,380 0,380
Parameters for directional light sources:			
Peak luminous intensity (cd)	189	Beam angle in degrees, or the range of beam angles that can be set	120
Parameters for LED and OLED light sources:			
R9 colour rendering index value	11	Survival factor	0,85
the lumen maintenance factor	0,75		

(a)¹⁾ : not applicable;

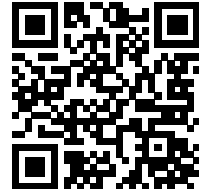
(b)¹⁾ : not applicable;

LQP000059CS0



Geschäftsführer: Wilfried Pöppet, Armin Pöppet
Telefon: 09170 - 972503-0,
Web: www.poeppet-produktion.de,
Email: info@poeppet-produktion.de
UST-ID: DE316671729, UST-ID: DE316671729,
WEEE-Reg.-Nr.: DE 92329341, RG Nürnberg HRB 34423

Model placed on the Union market from 30/06/2021



EPREL registration number: 765071

<https://eprel.ec.europa.eu/qr/765071>

Supplier: wipo elektrotechnik (Manufacturer)

Website:

Customer care service:

Name: Info

Website:

Email: Info@poellet-produktion.de

Phone: 091709725030

Address:

Allersberger Straße 52-54

90596 Schwanstetten

Germany