

# Product Information Sheet

COMMISSION DELEGATED REGULATION (EU) 2019/2015 with regard to energy labelling of light sources

**Supplier's name or trade mark:** ORION Leuchten

**Supplier's address:** QC, Oberlaaerstraße 284, 1230 Wien, AT

**Model identifier:** LM 230V/3,3W \*FO\* (G9/350lm/2800K)

## Type of light source:

Lighting technology used:	LED	Non-directional or directional:	NDLS
Light source cap-type (or other electric interface)	G9		
Mains or non-mains:	MLS	Connected light source (CLS):	No
Colour-tuneable light source:	No	Envelope:	-
High luminance light source:	No		
Anti-glare shield:	No	Dimmable:	No

## Product parameters

Parameter	Value	Parameter	Value
<b>General product parameters:</b>			
Energy consumption in on-mode (kWh/1000 h), rounded up to the nearest integer	4	Energy efficiency class	E
Useful luminous flux ( $\phi_{use}$ ), indicating if it refers to the flux in a sphere (360°), in a wide cone (120°) or in a narrow cone (90°)	350 in Sphere (360°)	Correlated colour temperature, rounded to the nearest 100 K, or the range of correlated colour temperatures, rounded to the nearest 100 K, that can be set	3 000
On-mode power ( $P_{on}$ ), expressed in W	3,3	Standby power ( $P_{sb}$ ), expressed in W and rounded to the second decimal	0,00
Networked standby power ( $P_{net}$ ) for CLS, expressed in W and rounded to the second decimal	-	Colour rendering index, rounded to the nearest integer, or the range of CRI-values that can be set	81
Outer dimensions without separate control gear, lighting control	Height	49	Spectral power distribution in the range 250 nm to 800 nm, at full-load
	Width	17	
	Depth	17	
			See image in last page

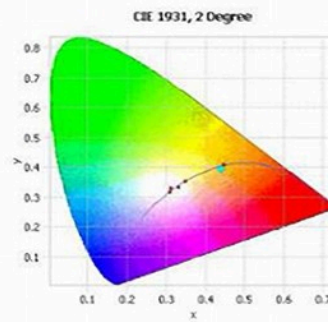
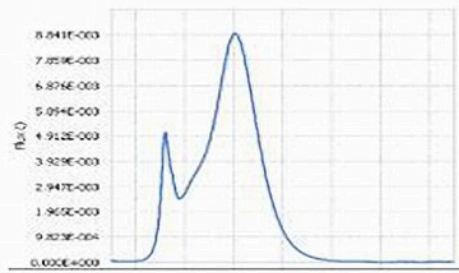
parts and non-lighting control parts, if any (millimetre)			
Claim of equivalent power <sup>(a)</sup>	-	If yes, equivalent power (W)	-
		Chromaticity coordinates (x and y)	0,440 0,403
<b>Parameters for LED and OLED light sources:</b>			
R9 colour rendering index value	8	Survival factor	0,90
the lumen maintenance factor	0,93		
<b>Parameters for LED and OLED mains light sources:</b>			
displacement factor (cos $\phi_1$ )	0,96	Colour consistency in McAdam ellipses	4
Claims that an LED light source replaces a fluorescent light source without integrated ballast of a particular wattage.	-(b)	If yes then replacement claim (W)	-
Flicker metric (Pst LM)	1,0	Stroboscopic effect metric (SVM)	0,4

(a)-: not applicable;

(b)-: not applicable;

Attachment 1: Photometric test record

Name	Value	Unit
$\Phi$	1.274E00	Watts
$\Phi(v)$	4.082E02	lumens
$\Phi(v')$	5.660E02	lm'
Chrom x	0.4399	
Chrom y	0.3951	
Chrom u	0.2564	
Chrom v	0.3455	
Duv	0.0044	
Chrom u'	0.2564	
Chrom v'	0.5182	
$\lambda$ (peak)	602.1	nm
$\lambda$ (center)	600.4	nm
$\lambda$ (centroid)	582.3	nm
$\lambda$ (dom)	584.9	nm
FWHM	108.1	nm
Purity	50.6	%
CCT	2874.0	°K
SDCM	4.1 F 3000	
Correlation	0.0054	
Corr. Coef.	0.00397385405435327	
RA	81.123662056698	
R1	82.3	
R2	96.9	
R3	86.6	
R4	76.1	
R5	83.4	
R6	94.4	
R7	75.8	
R8	53.3	
R9	4.5	
R10	93.4	
R11	75.4	
R12	78.3	
R13	86.7	
R14	93.3	



Test Report PPP 11118C:2021 Rev.02

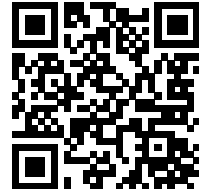
ID: 107082

Revision: 2 - released

Effective: 14 Oct 2021

Page 25 of 33  
TUV

Model placed on the Union market from 30/11/2021



**EPREL registration number:** 760520

<https://eprel.ec.europa.eu/qr/760520>

**Supplier:** Orion Leuchten-Fabrik Molecz & Sohn Gesellschaft m.b.H (Manufacturer)

**Website:** [www.orionleuchten.at](http://www.orionleuchten.at)

**Customer care service:**

**Name:** QC

**Website:** [www.orion.co.at](http://www.orion.co.at)

**Email:** [a.yasar@orion.co.at](mailto:a.yasar@orion.co.at)

**Phone:** 0676842740866

**Address:**

Oberlaaerstraße 284  
1230 Wien  
Austria