

Product Information Sheet

COMMISSION DELEGATED REGULATION (EU) 2019/2015 with regard to energy labelling of light sources

Supplier's name or trade mark: Lindby

Supplier's address: Luqom_Holding_GmbH, Seelbude 13, 36110 Schlitz, DE

Model identifier: 9992001

Type of light source:

Lighting technology used:	LED	Non-directional or directional:	NDLS
Light source cap-type (or other electric interface)	G9		
Mains or non-mains:	MLS	Connected light source (CLS):	No
Colour-tuneable light source:	No	Envelope:	-
High luminance light source:	No		
Anti-glare shield:	No	Dimmable:	No

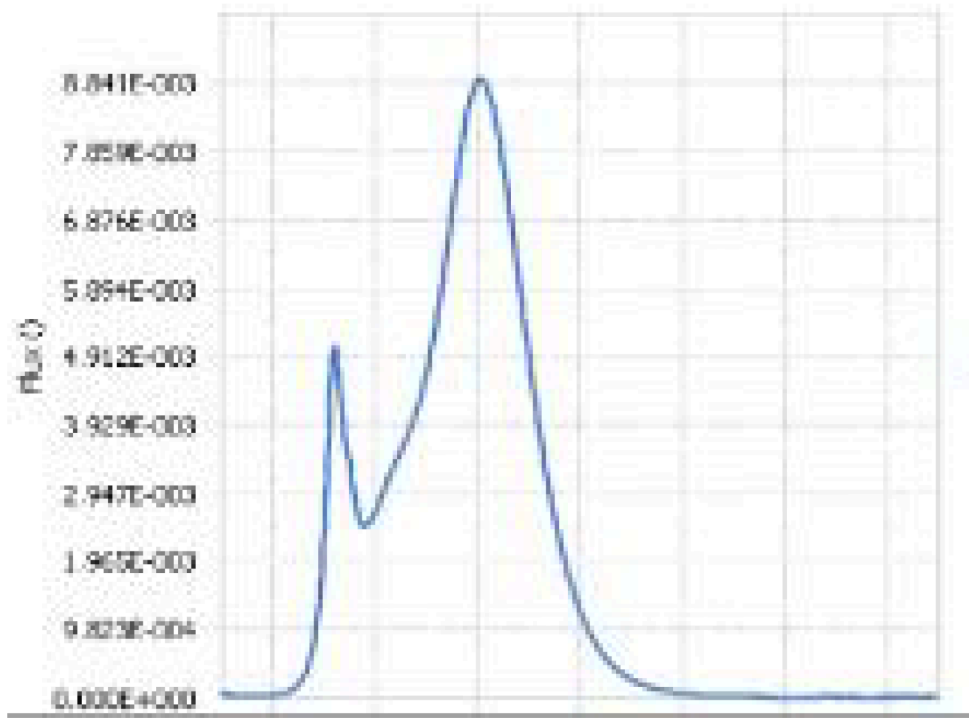
Product parameters

Parameter	Value	Parameter	Value
General product parameters:			
Energy consumption in on-mode (kWh/1000 h), rounded up to the nearest integer	3	Energy efficiency class	E
Useful luminous flux (ϕ_{use}), indicating if it refers to the flux in a sphere (360°), in a wide cone (120°) or in a narrow cone (90°)	330 in Sphere (360°)	Correlated colour temperature, rounded to the nearest 100 K, or the range of correlated colour temperatures, rounded to the nearest 100 K, that can be set	3 000
On-mode power (P_{on}), expressed in W	3,0	Standby power (P_{sb}), expressed in W and rounded to the second decimal	0,00
Networked standby power (P_{net}) for CLS, expressed in W and rounded to the second decimal	-	Colour rendering index, rounded to the nearest integer, or the range of CRI-values that can be set	80
Outer dimensions without separate control gear, lighting control	Height	50	Spectral power distribution in the range 250 nm to 800 nm, at full-load
	Width	17	
	Depth	17	
			See image in last page

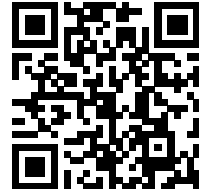
parts and non-lighting control parts, if any (millimetre)			
Claim of equivalent power ^(a)	Yes	If yes, equivalent power (W)	30
		Chromaticity coordinates (x and y)	0,440 0,403
Parameters for LED and OLED light sources:			
R9 colour rendering index value	0	Survival factor	0,90
the lumen maintenance factor	0,98		
Parameters for LED and OLED mains light sources:			
displacement factor (cos ϕ_1)	0,96	Colour consistency in McAdam ellipses	6
Claims that an LED light source replaces a fluorescent light source without integrated ballast of a particular wattage.	-(b)	If yes then replacement claim (W)	-
Flicker metric (Pst LM)	1,0	Stroboscopic effect metric (SVM)	0,4

(a)-: not applicable;

(b)-: not applicable;



Model placed on the Union market from 01/09/2021



EPREL registration number: 741245

<https://eprel.ec.europa.eu/qr/741245>

Supplier: LUQOM HOLDING GMBH (Manufacturer)

Website: www.luqom.eu

Customer care service:

Name: Luqom_Holding_GmbH

Website:

Email: service@lampenwelt.de

Phone: +49 (0) 66 42 - 251 9000

Address:

Seelbude 13
36110 Schlitz
Germany