

# Product Information Sheet

COMMISSION DELEGATED REGULATION (EU) 2019/2015 with regard to energy labelling of light sources

**Supplier's name or trade mark:** PP Poellet Produktion

**Supplier's address:** Info, Allersberger Straße 52-54, 90596 Schwanstetten, DE

**Model identifier:** LQS081200CC2A

## Type of light source:

Lighting technology used:	LED	Non-directional or directional:	DLS
Light source cap-type (or other electric interface)	Nein		
Mains or non-mains:	NMLS	Connected light source (CLS):	No
Colour-tuneable light source:	Yes	Envelope:	-
High luminance light source:	Yes		
Anti-glare shield:	No	Dimmable:	Only with specific dimmers

## Product parameters

Parameter	Value	Parameter	Value
-----------	-------	-----------	-------

### General product parameters:

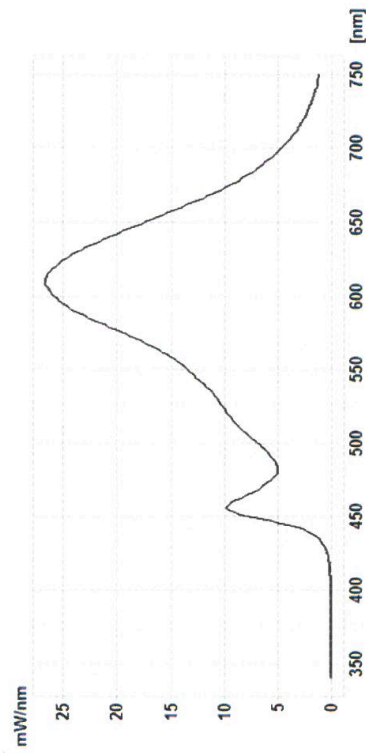
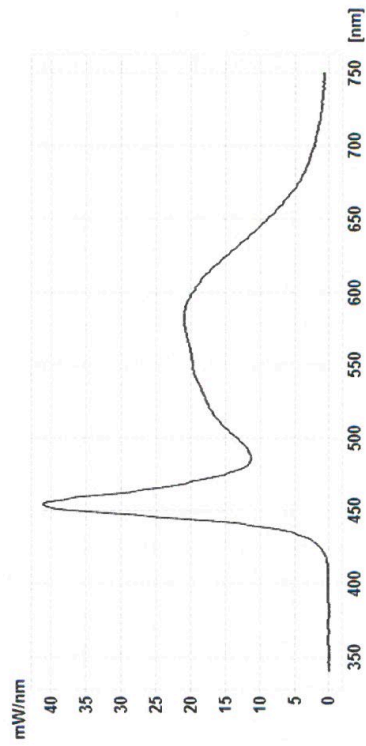
Energy consumption in on-mode (kWh/1000 h), rounded up to the nearest integer	19	Energy efficiency class	F
Useful luminous flux ( $\phi_{use}$ ), indicating if it refers to the flux in a sphere (360°), in a wide cone (120°) or in a narrow cone (90°)	1 554 in Sphere (360°)	Correlated colour temperature, rounded to the nearest 100 K, or the range of correlated colour temperatures, rounded to the nearest 100 K, that can be set	2610...5740
On-mode power ( $P_{on}$ ), expressed in W	17,3	Standby power ( $P_{sb}$ ), expressed in W and rounded to the second decimal	0,00
Networked standby power ( $P_{net}$ ) for CLS, expressed in W and rounded to the second decimal	-	Colour rendering index, rounded to the nearest integer, or the range of CRI-values that can be set	83
Outer dimensions without separate control gear, light-	Height	2	Spectral power distribution in the range 250 nm to 800 nm, at full-load
	Width	8	
	Depth	1 200	
			See image in last page

ing control parts and non-lighting control parts, if any (millimetre)			
Claim of equivalent power <sup>(a)</sup>	-	If yes, equivalent power (W)	-
		Chromaticity coordinates (x and y)	0,460 0,400
<b>Parameters for directional light sources:</b>			
Peak luminous intensity (cd)	495	Beam angle in degrees, or the range of beam angles that can be set	120
<b>Parameters for LED and OLED light sources:</b>			
R9 colour rendering index value	15	Survival factor	0,85
the lumen maintenance factor	0,75		

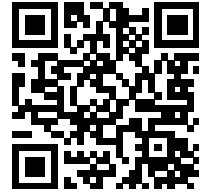
(a) : not applicable;

(b) : not applicable;

Modellkennung: LQS081200CCZA



Model placed on the Union market from 07/06/2021



**EPREL registration number:** 723473

<https://eprel.ec.europa.eu/qr/723473>

**Supplier:** wipo elektrotechnik (Manufacturer)

**Website:**

**Customer care service:**

**Name:** Info

**Website:**

**Email:** [Info@poellet-produktion.de](mailto:Info@poellet-produktion.de)

**Phone:** 091709725030

**Address:**

Allersberger Straße 52-54  
90596 Schwanstetten  
Germany